



**Corporate Office**

C-206, Road no. 5,  
Indraprastha Industrial Area,  
Kota – 324005

**Phone no:**

+91 9828105854,  
+91 9828105851

[info@bundisilica.com](mailto:info@bundisilica.com)

[www.bundisilica.com](http://www.bundisilica.com)



**PRODUCT CATALOGUE**



## Bundi Silica Exports

Largest Quarry of Sandstone in India

Bundi Silica Exports is a division of the Bundi Silica Group of Mines. We are the leading exporter, manufacturer and supplier of Natural Stone in India. We celebrate 75+ Years of experience as the leaders and pioneers in the value chain of Natural stone Industry. Additionally, we handle the entire processing, packaging, and delivery with a robust process.

Our extensive range of stones is chosen for European hard landscaping, indoor flooring, walling and other skilled applications. Our export house is widespread in an area of 50,000 sq meters in which we look after the State of the art processing and cater the requirements of our clientele spread across the globe.

### **Other Companies Part of Bundi Silica Group** **KANHAIYA LAL RAMESHWAR DAS**

Situated 40 kms away west of Kota, on Dabi Road, is the Sandstone Quarry, which measures up to 10 Sq. Kms in area. This is the largest area under a single mining lease in Rajasthan and has been operational for decades.

### **SHREENATH ENTERPRISES PVT. LTD.**

The company is involved in mining & processing of Limestone known as Kota stone. It has its own quarry area situated in the Chechat, Ramganjmandi area near Kota. The total production goes up to 2.5 million sq meters per year.

### **BUNDI SILICA SAND SUPPLY COMPANY**

The company is engaged in producing, beneficiation, and trading Silica sand. Located near a village in Barodia District, this mine has been working for the last 60 years.

### **K.R. MARBLES PVT. LTD.**

The company is into mining & processing of Marble and has several mining leases in Bhilwara (Rajasthan). The unit is equipped with the latest diamond gang saw block handling and wire saw machines.

# I N D E X

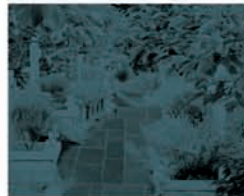
## » SANDSTONE «

Bespoke handmade stone  
Pg 11 - Pg 36



## » LIMESTONE «

Nature's timeless elegance, crafted in stone.  
Pg 37 - Pg 50



## » BASALT «

The rugged strength of earth, sculpted to perfection  
Pg 51 - Pg 52



## » SLATE «

Nature's refined elegance, layered in timeless beauty  
Pg 53 - Pg 56



## » QUARTZITE «

The ultimate fusion of strength & sophistication  
Pg 57 - Pg 58



## » GRANITE «

Enduring beauty carved from the heart of the earth  
Pg 59 - Pg 62



## » MARBLE «

The epitome of classic beauty,  
sculpted by time and nature  
Pg 63 - Pg 64



### SURFACE FINISHES

Dholpur Beige  
Dholpur Pink  
Aravali (Jodhpur Pink)  
Panther  
Jaisalmer Yellow  
Ita Gold  
Lalitpur Yellow  
Agra Red

### EDGE FINISHES

### SANDSTONE

Autumn Brown  
Kandla Grey  
Gwalior Mint  
Raj Green  
Buff  
Modak  
Sagar Black  
Kandla White Beige  
Slate Grey  
Red Chocolate  
Double Color  
Teakwood  
Rainbow

### LIME STONE

Kota Blue  
Tandur Grey  
Tandur Yellow  
Bundi Black  
Kadappa Black  
Kurnool Grey

### BASALT

### SLATE

Jak Black  
Jak Multi  
Kund Multi  
California Gold  
Indian Autumn  
Indian Autumn Rustic  
H. Green Rustic  
Multi Pink  
Pure Pink  
S P Autumn  
S R A Multicolour  
Mayur Multi

### QUARTZITE

### GRANITE

### MARBLE

### PORPHYRY

### ARTICLE

### PORCELAIN

Earthcore Grey  
Desert LGY  
Raj Green  
Anthracite  
Kandla Grey  
Desert Beige  
Hammer Stone Beige  
Mountain White  
Quartz White

### SAWN PAVING

### COBBLE

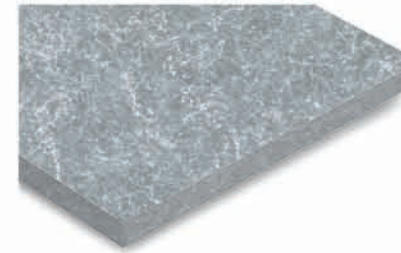
### STONE VENEER

### PEBBLES

# Surface Finishes

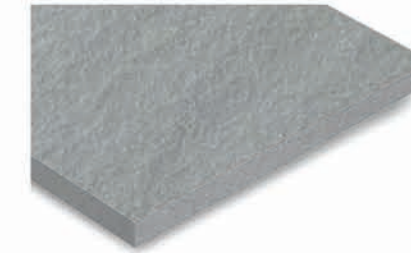
Natural Stone texture finishes offer a variety of aesthetic and functional options.

These finishes highlight sandstone's versatility and natural beauty, allowing it to be used in various architectural and decorative applications.



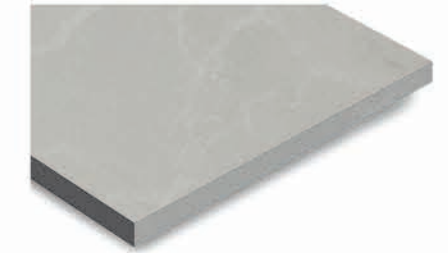
Tumbled / Aged / Restored

This is done by vibrating the target stone with small pieces of harder stone or media, giving it a worn, aged look with smooth, rounded edges.



Flamed

This finish is achieved by applying high-speed flames to the stone, causing surface grains to erupt and create a rugged, irregular texture with no sharp edges. The colors are typically more muted than those of polished stone.



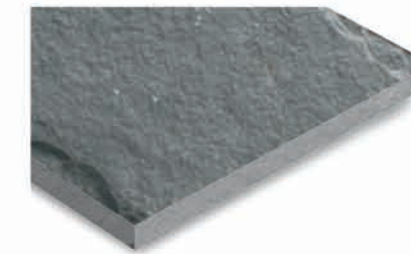
Brushed / Antique

Brushing the stone with hard bristles gives it a smooth texture and enhances its color.



Bush Hammered

Bush hammering, done manually or mechanically with a masonry tool, creates uniformly distributed craters of various sizes, mimicking naturally weathered rock.



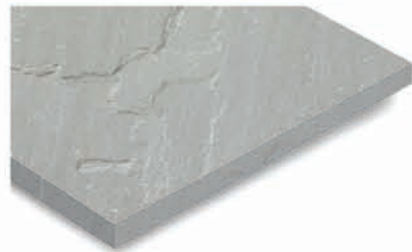
Rockfaced / Mushroom

A Mushroom / Rockfaced finish is achieved by manually chiseling the stone's edges with controlled blows, creating a rustic appearance with relief and irregularities.



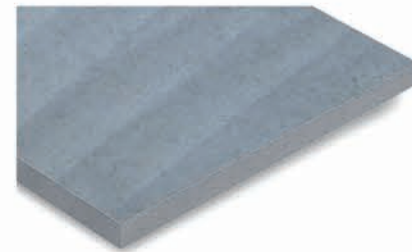
Calibrated

A stone calibration machine removes excess material and creates grooves with the right blade to maintain thickness. This texture is used only on the bottom surface.



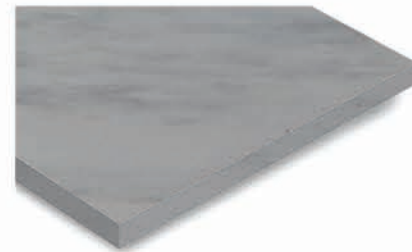
Natural / Riven

Stone blocks are ripped with the help of a hammer and chisel along their line of cleavage to reveal the natural grain & texture. This finish gives an undulating surface, showcasing its unique character.



Sawn

The sawn or machine-cut finish is achieved using diamond disc teeth, producing a regular surface with subtle undulations and furrows that are felt but not easily seen.



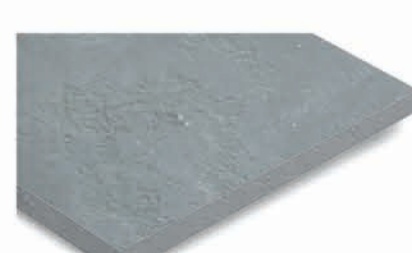
Honed / Polished

The natural stone is polished with abrasives for a smooth, flat surface and lower porosity. The lasting sheen comes from the polishing process, not from chemical treatments.



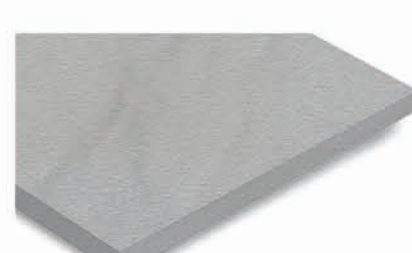
Sandblasted

This finish is created by blasting silica sand to form tiny craters, enhancing both color and texture. It can be applied to natural, sawn, or honed surfaces.



Half Honed

As the name suggests, the stone obtains a beautiful blend of a partially honed and a partially natural surface.



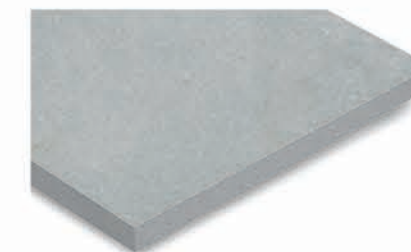
Shot/Blasting

Shot blasting uses high-speed iron balls to create a uniform, uneven surface with larger craters.

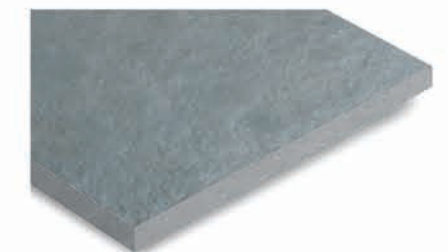
## INNOVATIVE TEXTURE



Half Honed + Brushed + Tumbled



Honed + Tumbled



Natural + Tumbled + Brushed



Leather

### TOP SURFACE

We offer a range of stone finishes to match your desired look, feel, and application. In addition to traditional finishes, we continually explore new, innovative options to give stones a fresh, unique appearance.

### BOTTOM SURFACE

The stone base comes in various formats depending on its processing. Choose the format that best suits your application or purpose.

# Edge Finishes



Handcut



Straight Handcut



Machine Cut / Sawn



Chamfered / Beveled



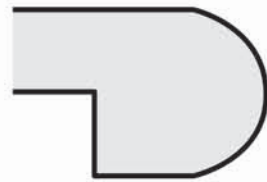
Full Bullnose



Half Bullnose / Owl's Beak



1/4 Round



Coping Edge



Chiselled Edge



# Sandstone

*Sandstone's timeless beauty lies in its rich hues and intricate patterns, sculpted by nature over millennia. Its strength and elegance make it a cherished choice for both architecture and artistry.*

# Autumn Brown



**CIRCLE**

1.8m, 2.6m, 2.85 m, 3m, 4m



**COBBLE**

14x14 cm  
14x20 cm  
20x20 cm  
10x10 cm

(available in 3-5 cm, 5-7 cm, 7-9 cm)



**PALISADE**

230 x 50 x 5 - 7 cm  
100/150/200 x 50 x 3-5 cm  
225 x 80 - 100 x 6 - 8 cm  
50-200 x 12 x 11 - 13 cm



**STEP**

50 - 200 x 35 x 15 cm



**KERBSTONE**

100 x 20 x 5 - 7 cm  
100 x 20 x 7 - 9 cm  
100 x 25 x 14 - 16 cm



**FLAGSTONE**

2-3 pcs per sqmtr  
4-6 pcs per sqmtr  
5-8 pcs per sqmtr

**PAVING**

29x29 cm  
60x29 cm  
60x40 cm  
60x60 cm  
60x90 cm



(available in 1.8 cm, 2.2cm, 2.5cm, 3 cm )

**STEPPING STONE**

40-60 x 30 -40 x 2.5-4 cm



*Autumn Brown Sandstone is a popular natural stone known for its warm, earthy tones, typically ranging from brown and tan to subtle hues of orange and red. This versatile stone is often used for various applications such as paving, flooring, wall cladding, and landscaping due to its durability and aesthetic appeal. The natural variation in color and texture makes each piece unique, adding a rustic and natural charm to any project. Additionally, Autumn Brown Sandstone is weather-resistant and easy to maintain, making it a practical choice for both indoor and outdoor use.*

Custom sizes are available.

*Sandstone Disclaimer:  
The hardness of sandstone varies depending on the binding material (cement). If the sediment particles are cemented by calcite, the sandstone will seem softer.*

# Kandla Grey



**CIRCLE**

1.8m, 2.6m, 2.85 m, 3m, 4m



**COBBLE**

14x14 cm  
14x20 cm  
20x20 cm  
10x10 cm

(available in 3-5 cm, 5-7 cm, 7-9 cm)



**PALISADE**

230 x 50 x 5 - 7 cm  
100/150/200 x 50 x 3-5 cm  
225 x 80 - 100 x 6 - 8 cm  
50-200 x 12 x 11 - 13 cm



**STEP**

50 - 200 x 35 x 15 cm



**WALLING**

20-40 x 20 x 10/15/20 cm



**FLAGSTONE**

2-3 pcs per sqmtr  
4-6 pcs per sqmtr  
5-8 pcs per sqmtr

**PAVING**

29x29 cm  
60x29 cm  
60x40 cm  
60x60 cm  
60x90 cm



(available in 1.8 cm, 2.2cm, 2.5cm, 3 cm )

*Kandla Grey Sandstone is a popular natural stone known for its durability, strength, and aesthetic appeal. Originating from the Kandla region in India, this sandstone features a uniform grey color with occasional tonal variations, making it a preferred choice for both interior and exterior applications. Its resistance to weathering and low water absorption make it ideal for paving, flooring, wall cladding, and landscaping. Additionally, Kandla Grey Sandstone is often used in the construction of patios, driveways, and pathways due to its ability to withstand heavy traffic and harsh environmental conditions. Its subtle and elegant appearance adds a timeless charm to any architectural project.*

*Sandstone Disclaimer:  
The hardness of sandstone varies depending on the binding material (cement). If the sediment particles are cemented by calcite, the sandstone will seem softer.*



# Gwalior Mint



**CIRCLE**

1.8m, 2.6m, 2.85 m, 3m, 4m



**COBBLE / TUMBLE**

14x14 cm  
14x20 cm  
20x20 cm  
10x10 cm

(available in 3-5 cm, 5-7 cm, 7-9 cm)



**PALISADE**

230 x 50 x 5 - 7 cm  
100/150/200 x 50 x 3-5 cm  
225 x 80 - 100 x 6 - 8 cm  
50-200 x 12 x 11 - 13 cm



**STEP**

50 - 200 x 35 x 15 cm



**WALLING**

20-40 x 20 x 10/15/20 cm



**KERBSTONE**

100 x 20 x 5 - 7 cm  
100 x 20 x 7 - 9 cm  
100 x 25 x 14 - 16 cm

**PAVING**

29x29 cm  
60x29 cm  
60x40 cm  
60x60 cm  
60x90 cm



(available in 1.8 cm, 2.2cm, 2.5cm, 3 cm )

*Gwalior Mint Sandstone is a renowned type of sandstone quarried in the Gwalior region of Madhya Pradesh, India. Known for its durability, fine grain, and appealing natural colors, which range from white and beige to yellow and pink, this sandstone is widely used in construction and architectural projects. Its aesthetic qualities make it a popular choice for cladding, flooring, paving, and decorative elements in both traditional and contemporary buildings. The Gwalior Mint Sandstone's versatility and beauty have made it a favored material in the Indian subcontinent and beyond.*

Custom sizes are available.

*Sandstone Disclaimer:*

*The hardness of sandstone varies depending on the binding material (cement). If the sediment particles are cemented by calcite, the sandstone will seem softer.*

# Raj Green



## KERBSTONE

- 100 x 20 x 5 - 7 cm
- 100 x 20 x 7 - 9 cm
- 100 x 25 x 14 - 16 cm



## COBBLE / TUMBLE

- 14x14 cm
- 14x20 cm
- 20x20 cm
- 10x10 cm

(available in 3-5 cm, 5-7 cm, 7-9 cm)



## PAVING

- 29x29 cm
- 60x29 cm
- 60x40 cm
- 60x60 cm
- 60x90 cm



(available in 1.8 cm, 2.2cm, 2.5cm, 3 cm )

*Raj Green Sandstone Raj Green Indian Sandstone is a highly sought-after natural stone, renowned for its calming greenish-bronze hue with subtle hints of golden light. Its classic appearance is reminiscent of traditional York stone, a staple in ancient UK architecture. However, Raj Green Sandstone Paving Slabs offer a cost-effective alternative, making them a preferred choice for many. Raj Green Sandstone paving is designed to withstand the elements, effortlessly enduring harsh weather conditions while maintaining its traction and grip underfoot. Its timeless beauty and exceptional resilience ensure a beautiful and safe outdoor space for years to come.*

Custom sizes are available.



*Sandstone Disclaimer:  
The hardness of sandstone varies depending on the binding material (cement). If the sediment particles are cemented by calcite, the sandstone will seem softer.*

# Buff



### COBBLE / TUMBLE

14x14 cm  
14x20 cm  
20x20 cm  
10x10 cm  
(available in 3-5 cm, 5-7 cm, 7-9 cm)



### STEP

50 - 200 x 35 x 15 cm



### PALISADE

230 x 50 x 5 - 7 cm  
100/150/200 x 50 x 3-5 cm  
225 x 80 - 100 x 6 - 8 cm  
50-200 x 12 x 11 - 13 cm



### KERBSTONE

100 x 20 x 5 - 7 cm  
100 x 20 x 7 - 9 cm  
100 x 25 x 14 - 16 cm



### PAVING

29x29 cm  
60x29 cm  
60x40 cm  
60x60 cm  
60x90 cm

(available in 1.8 cm, 2.2cm, 2.5cm, 3 cm )

" Buff also known as Camel or Rippon, is a creamish light brown sandstone, with golden hues running across its surface. It is a hard wearing stone with natural earthy tones, giving it a warm appearance. Buff Brown Sandstone is a testament to nature's splendor, making it an ideal choice for those seeking a timeless and captivating natural stone."

Custom sizes are available.

Sandstone Disclaimer:  
The hardness of sandstone varies depending on the binding material (cement). If the sediment particles are cemented by calcite, the sandstone will seem softer.

# Modak



## COBBLE / TUMBLE

14x14 cm  
14x20 cm  
20x20 cm  
10x10 cm  
(available in 3-5 cm, 5-7 cm, 7-9 cm)



## STEP

50 - 200 x 35 x 15 cm



## PALISADE

230 x 50 x 5 - 7 cm  
100/150/200 x 50 x 3-5 cm  
225 x 80 - 100 x 6 - 8 cm  
50-200 x 12 x 11 - 13 cm



## KERBSTONE

100 x 20 x 5 - 7 cm  
100 x 20 x 7 - 9 cm  
100 x 25 x 14 - 16 cm



## PAVING

29x29 cm  
60x29 cm  
60x40 cm  
60x60 cm  
60x90 cm



(available in 1.8 cm, 2.2cm, 2.5cm, 3 cm )

*Modak Sandstone a unique fusion of colors, including the captivating satin pink hue. Renowned for its exceptional hardness, Modak Sandstone is perfectly suited for cold climates, making it a popular choice for outdoor applications. At our Modak quarries, we employ traditional hand-cutting techniques to craft our stone products with precision and care. Rough blocks are carefully split into slabs of desired thickness, then transformed into pavers and flagstones, available in a range of size specifications. As trusted Modak sandstone suppliers in India. Modak Sandstone adds a touch of natural beauty to any setting, with its distinctive riven paving surface and authentic aging process, which artfully weathers the stone to perfection."*

Custom sizes are available.

*Sandstone Disclaimer:  
The hardness of sandstone varies depending on the binding material (cement). If the sediment particles are cemented by calcite, the sandstone will seem softer.*

# Sagar Black



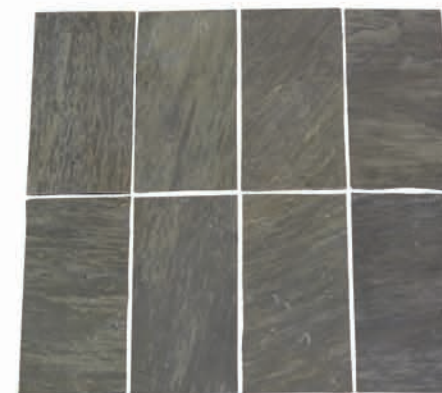
## COBBLE / TUMBLE

14x14 cm  
14x20 cm  
20x20 cm  
10x10 cm  
(available in 3-5 cm, 5-7 cm, 7-9 cm)



## PAVING

29x29 cm  
60x29 cm  
60x40 cm  
60x60 cm  
60x90 cm



(available in 1.8 cm, 2.2cm, 2.5cm, 3 cm )

*Sagar Black Sandstone is distinctive charcoal hue is beautifully accentuated by ochre yellow undertones, creating a rich, traditional paving that exudes warmth and character. Highly sought after in Europe for large-scale landscaping projects, Sagar Black Sandstone is also the preferred choice for exterior cladding on sea-shore buildings, where its durability and weather resistance are on full display. Its dark, dramatic color makes it an ideal choice for driveways, as it adds a touch of sophistication and elegance to any entrance. The versatility of Sagar Black Sandstone extends to wall cladding, where its riven finish and river-washed texture add depth and visual interest.*

Custom sizes are available.

*Sandstone Disclaimer:  
The hardness of sandstone varies depending on the binding material (cement). If the sediment particles are cemented by calcite, the sandstone will seem softer.*

# Kandla White Beige



## PALISADE

230 x 50 x 5 - 7 cm  
 100/150/200 x 50 x 3-5 cm  
 225 x 80 - 100 x 6 - 8 cm  
 50-200 x 12 x 11 - 13 cm



## COBBLE / TUMBLE

14x14 cm  
 14x20 cm  
 20x20 cm  
 10x10 cm  
 (available in 3-5 cm, 5-7 cm, 7-9 cm)



## PAVING

29x29 cm  
 60x29 cm  
 60x40 cm  
 60x60 cm  
 60x90 cm



(available in 1.8 cm, 2.2cm, 2.5cm, 3 cm )

*Kandla White Beige has a white-beige to grey base colour with some dispersed golden yellow and pinkish accent. This unique fusion of colours doesn't just add style to your space, it also introduces an element of visual interest which is unique to the stone. Due to its neutral tone, the stone is popular for garden pavings, setts, and goes well with the local architecture.*

Custom sizes are available.

*Sandstone Disclaimer:  
 The hardness of sandstone varies depending on the binding material (cement). If the sediment particles are cemented by calcite, the sandstone will seem softer.*

# Slate Grey



## FLAGSTONE

2-3 pcs per sqmtr  
 4-6 pcs per sqmtr  
 5-8 pcs per sqmtr

## COBBLE / TUMBLE

14x14 cm  
 14x20 cm  
 20x20 cm  
 10x10 cm  
 (available in 3-5 cm, 5-7 cm, 7-9 cm)



## PAVING

29x29 cm  
 60x29 cm  
 60x40 cm  
 60x60 cm  
 60x90 cm



(available in 1.8 cm, 2.2cm, 2.5cm, 3 cm )

*Slate grey sandstone is a fine-grained, durable sedimentary rock with a distinctive grey color that often has subtle variations and natural layering. Its muted, cool tones give it a modern, elegant look, making it popular in architecture and landscaping for paving, cladding, and decorative features. Sandstone's weather resistance and texture make it suitable for both indoor and outdoor use, combining aesthetic appeal with practical durability.*

Custom sizes are available.

*Sandstone Disclaimer:  
 The hardness of sandstone varies depending on the binding material (cement). If the sediment particles are cemented by calcite, the sandstone will seem softer.*

# Red Chocolate



### COBBLE / TUMBLE

- 14x14 cm
- 14x20 cm
- 20x20 cm
- 10x10 cm

(available in 3-5 cm, 5-7 cm, 7-9 cm)

### PALISADE

- 230 x 50 x 5 - 7 cm
- 100/150/200 x 50 x 3-5 cm
- 225 x 80 - 100 x 6 - 8 cm
- 50-200 x 12 x 11 - 13 cm

### STEP

- 50 - 200 x 35 x 15 cm

### FLAGSTONE

- 2-3 pcs per sqmtr
- 4-6 pcs per sqmtr
- 5-8 pcs per sqmtr

*Red Chocolate Sandstone is a kind of brown sandstone quarried in India. This stone is especially good for Building stone, monuments, pool coping, sills, ornamental stone, interior, exterior, wall, floor, paving and other design projects. It also called Chocolate, Red Chocolate Sandstone*

Custom sizes are available.

*Sandstone Disclaimer: The hardness of sandstone varies depending on the binding material (cement). If the sediment particles are cemented by calcite, the sandstone will seem softer.*

# Double Color



### PALISADE

- 230 x 50 x 5 - 7 cm
- 100/150/200 x 50 x 3-5 cm
- 225 x 80 - 100 x 6 - 8 cm
- 50-200 x 12 x 11 - 13 cm

### COBBLE / TUMBLE

- 14x14 cm
- 14x20 cm
- 20x20 cm
- 10x10 cm

(available in 3-5 cm, 5-7 cm, 7-9 cm)

### PAVING

- 29x29 cm
- 60x29 cm
- 60x40 cm
- 60x60 cm
- 60x90 cm

(available in 1.8 cm, 2.2cm, 2.5cm, 3 cm )

*Double color sandstone features two distinct tones within a single stone, creating a unique and visually appealing contrast. The color variations can range from subtle to striking, with patterns that often include natural swirls, bands, or layers. This sandstone is commonly used in decorative applications like flooring, wall cladding, and landscaping, adding depth and character to designs. Its blend of colors makes it versatile for both traditional and contemporary settings while maintaining the durability and weather resistance typical of sandstone.*

Custom sizes are available.

*Sandstone Disclaimer: The hardness of sandstone varies depending on the binding material (cement). If the sediment particles are cemented by calcite, the sandstone will seem softer.*

# Teakwood



PLANTERS



GARDEN BENCHES

SPHERE



PAVING

- 29x29 cm
- 60x29 cm
- 60x40 cm
- 60x60 cm
- 60x90 cm



(available in 1.8 cm, 2.2cm, 2.5cm, 3 cm )

Custom sizes are available.

*Sandstone Disclaimer:*  
The hardness of sandstone varies depending on the binding material (cement). If the sediment particles are cemented by calcite, the sandstone will seem softer.

# Rainbow



PLANTERS



SPHERE

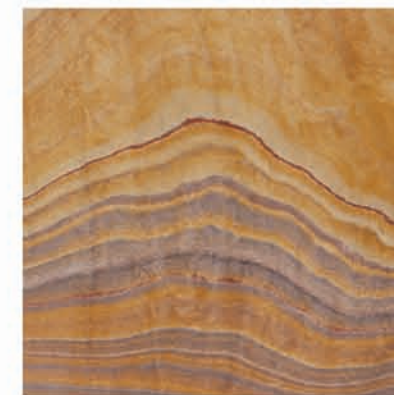


BIRDBATH



PAVING

- 29x29 cm
- 60x29 cm
- 60x40 cm
- 60x60 cm
- 60x90 cm



(available in 1.8 cm, 2.2cm, 2.5cm, 3 cm )

Custom sizes are available.

*Sandstone Disclaimer:*  
The hardness of sandstone varies depending on the binding material (cement). If the sediment particles are cemented by calcite, the sandstone will seem softer.

# Dholpur Beige



**PAVING**

- 29x29 cm
- 60x29 cm
- 60x40 cm
- 60x60 cm
- 60x90 cm

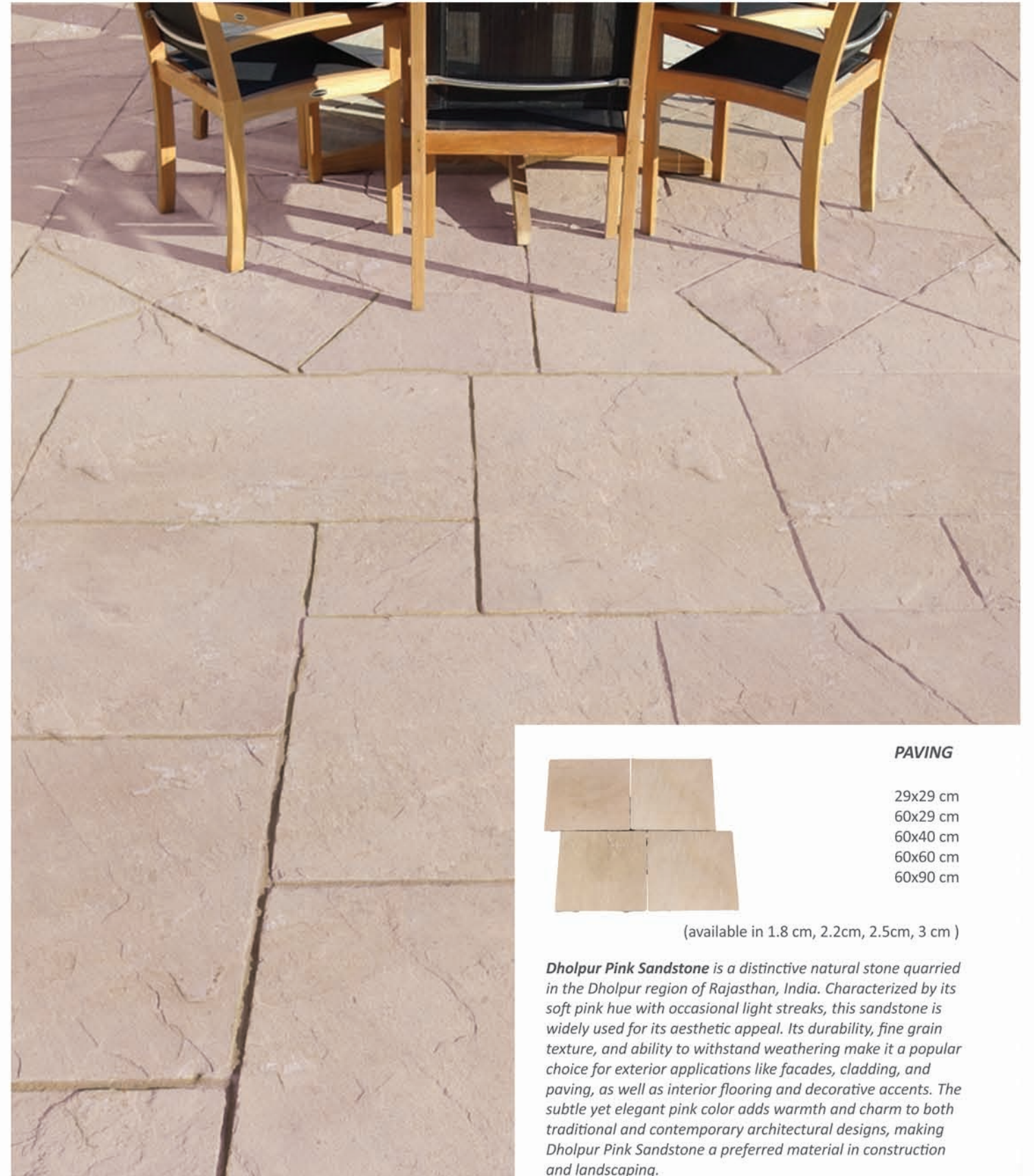
(available in 1.8 cm, 2.2cm, 2.5cm, 3 cm )

*Dholpur Beige Sandstone, also known as Dholpur Cream Sandstone, is a popular natural stone originating from the Dholpur region of Rajasthan, India. It is known for its uniform beige color, fine grain texture, and subtle variations that add character without overpowering a space. This sandstone is widely used for both interior and exterior applications, such as flooring, wall cladding, paving, and facades. Its durability, weather resistance, and non-slip properties make it suitable for various climates. Dholpur Beige Sandstone's elegant appearance combined with its resilience makes it a favored choice in construction and landscaping projects.*

Custom sizes are available.

*Sandstone Disclaimer:  
The hardness of sandstone varies depending on the binding material (cement). If the sediment particles are cemented by calcite, the sandstone will seem softer.*

# Dholpur Pink



**PAVING**

- 29x29 cm
- 60x29 cm
- 60x40 cm
- 60x60 cm
- 60x90 cm

(available in 1.8 cm, 2.2cm, 2.5cm, 3 cm )

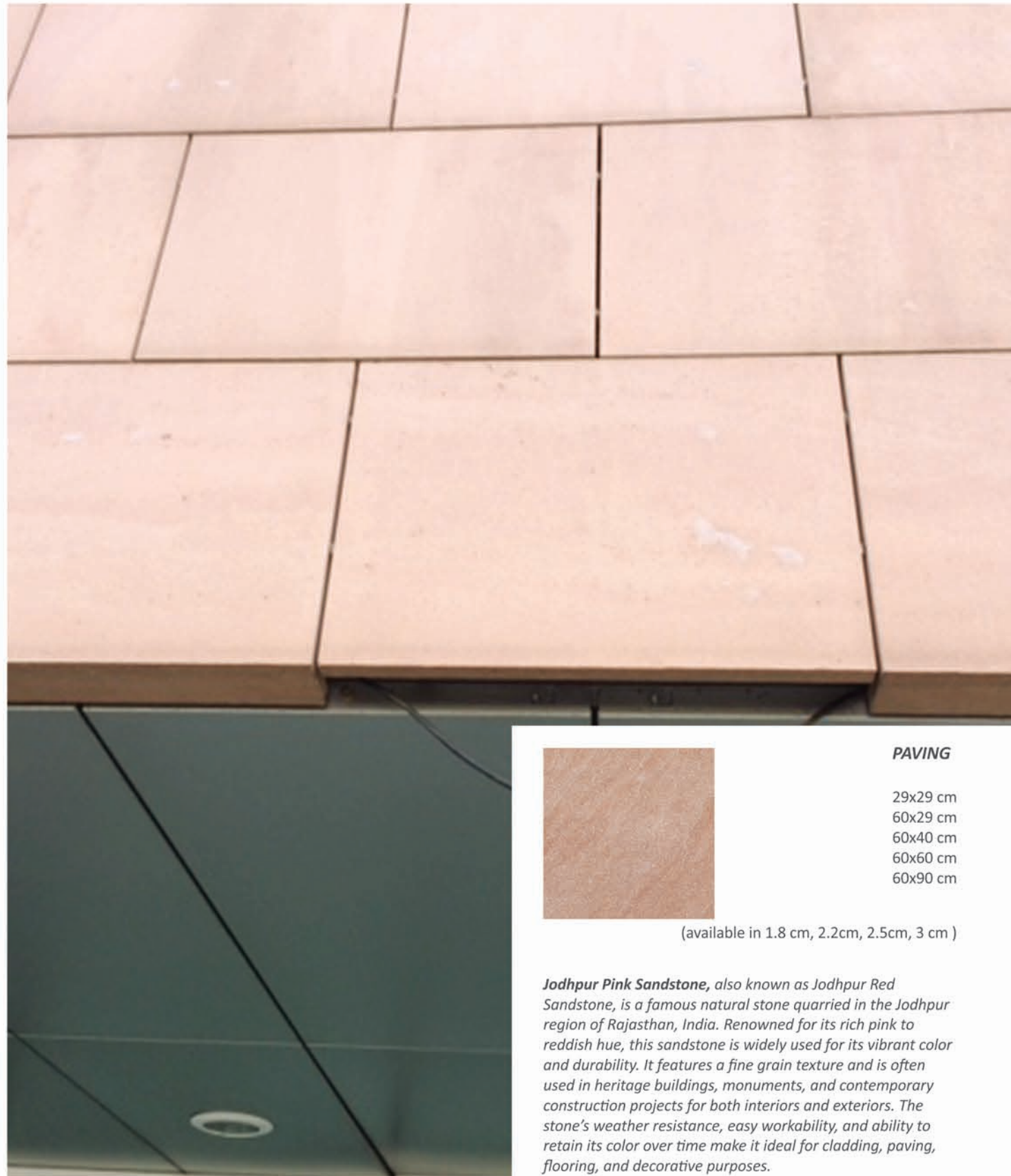
*Dholpur Pink Sandstone is a distinctive natural stone quarried in the Dholpur region of Rajasthan, India. Characterized by its soft pink hue with occasional light streaks, this sandstone is widely used for its aesthetic appeal. Its durability, fine grain texture, and ability to withstand weathering make it a popular choice for exterior applications like facades, cladding, and paving, as well as interior flooring and decorative accents. The subtle yet elegant pink color adds warmth and charm to both traditional and contemporary architectural designs, making Dholpur Pink Sandstone a preferred material in construction and landscaping.*

Custom sizes are available.

*Sandstone Disclaimer:  
The hardness of sandstone varies depending on the binding material (cement). If the sediment particles are cemented by calcite, the sandstone will seem softer.*



# Aravalli (Jodhpur Pink)



### PAVING

- 29x29 cm
- 60x29 cm
- 60x40 cm
- 60x60 cm
- 60x90 cm

(available in 1.8 cm, 2.2cm, 2.5cm, 3 cm )

*Jodhpur Pink Sandstone, also known as Jodhpur Red Sandstone, is a famous natural stone quarried in the Jodhpur region of Rajasthan, India. Renowned for its rich pink to reddish hue, this sandstone is widely used for its vibrant color and durability. It features a fine grain texture and is often used in heritage buildings, monuments, and contemporary construction projects for both interiors and exteriors. The stone's weather resistance, easy workability, and ability to retain its color over time make it ideal for cladding, paving, flooring, and decorative purposes.*

Custom sizes are available.

*Sandstone Disclaimer:  
The hardness of sandstone varies depending on the binding material (cement). If the sediment particles are cemented by calcite, the sandstone will seem softer.*

# Panther



### PAVING

- 29x29 cm
- 60x29 cm
- 60x40 cm
- 60x60 cm
- 60x90 cm

(available in 1.8 cm, 2.2cm, 2.5cm, 3 cm )

*Panther Sandstone, is a unique natural stone quarried in India, known for its striking dark tones and distinct wavy patterns in shades of black, brown, and grey. This sandstone is appreciated for its bold, dramatic appearance, making it ideal for creating eye-catching features in both indoor and outdoor settings. Commonly used for wall cladding, flooring, pavements, and decorative applications, Panther Sandstone is durable and weather-resistant. Its non-slip surface and distinctive look make it a popular choice for both residential and commercial projects, adding an elegant and contemporary touch.*

Custom sizes are available.

*Sandstone Disclaimer:  
The hardness of sandstone varies depending on the binding material (cement). If the sediment particles are cemented by calcite, the sandstone will seem softer.*

# Jaisalmer Yellow



### PAVING

- 29x29 cm
- 60x29 cm
- 60x40 cm
- 60x60 cm
- 60x90 cm

(available in 1.8 cm, 2.2cm, 2.5cm, 3 cm )

*Jaisalmer Yellow Sandstone, often called "Golden Stone," is a famous natural stone from the Jaisalmer region in Rajasthan, India. It is widely used in heritage buildings, forts, and palaces, including the renowned Jaisalmer Fort, giving it the name "Golden City." Jaisalmer Yellow Sandstone is popular in modern construction for flooring, cladding, paving, and decorative elements due to its durability, weather resistance, and timeless appeal. Its radiant color and ability to maintain a cool surface even in hot climates make it ideal for both exterior and interior applications.*

Custom sizes are available.

*Sandstone Disclaimer:  
The hardness of sandstone varies depending on the binding material (cement). If the sediment particles are cemented by calcite, the sandstone will seem softer.*

# Ita Gold



### PAVING

- 29x29 cm
- 60x29 cm
- 60x40 cm
- 60x60 cm
- 60x90 cm

(available in 1.8 cm, 2.2cm, 2.5cm, 3 cm )

*Ita Gold Sandstone is a premium natural stone known for its striking golden-yellow hue with subtle streaks of brown and orange. Quarried in the Rajasthan region of India, its fine to medium grain texture, along with its durability and weather resistance, make it a preferred choice for both residential and commercial projects. Ita Gold Sandstone is commonly used in flooring, wall cladding, facades, and paving. The rich color and elegant finish add a touch of luxury and sophistication to spaces, blending well with both traditional and contemporary designs.*

Custom sizes are available.

*Sandstone Disclaimer:  
The hardness of sandstone varies depending on the binding material (cement). If the sediment particles are cemented by calcite, the sandstone will seem softer.*

# Lalitpur Yellow



## PAVING

29x29 cm  
60x29 cm  
60x40 cm  
60x60 cm  
60x90 cm

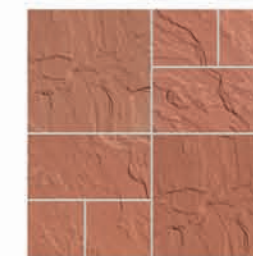
(available in 1.8 cm, 2.2cm, 2.5cm, 3 cm )

*Lalitpur Yellow Sandstone is a widely recognized natural stone originating from the Lalitpur region in Uttar Pradesh, India. Known for its soft, warm yellow color with subtle hints of beige and brown, this sandstone has a smooth, fine grain texture. It is favored for its durability, weather resistance, and ability to maintain its color over time. Lalitpur Yellow Sandstone is commonly used for exterior applications like cladding, paving, and landscaping, as well as interior flooring and decorative accents. Its earthy, elegant tones make it a versatile choice that enhances both modern and traditional architectural designs.*

Custom sizes are available.

*Sandstone Disclaimer:  
The hardness of sandstone varies depending on the binding material (cement). If the sediment particles are cemented by calcite, the sandstone will seem softer.*

# Agra Red



## PAVING

29x29 cm  
60x29 cm  
60x40 cm  
60x60 cm  
60x90 cm

(available in 1.8 cm, 2.2cm, 2.5cm, 3 cm )

*Agra Red Sandstone is a historic and widely used natural stone, known for its deep red to reddish-brown color. Quarried primarily in the Agra region of India, it gained prominence during the Mughal era and was extensively used in iconic monuments like the Red Fort and Agra Fort. This sandstone is appreciated for its strength, durability, and resistance to weathering, making it ideal for both outdoor and indoor applications. Agra Red Sandstone is commonly used for wall cladding, flooring, pavements, and architectural features.*

Custom sizes are available.

*Sandstone Disclaimer:  
The hardness of sandstone varies depending on the binding material (cement). If the sediment particles are cemented by calcite, the sandstone will seem softer.*



# Limestone

*Nature's timeless elegance,  
crafted by earth and refined by  
time. Perfect for enhancing your  
spaces with enduring beauty,  
strength, and a touch of  
sophistication that only natural  
stone can offer.*

# Kota Blue



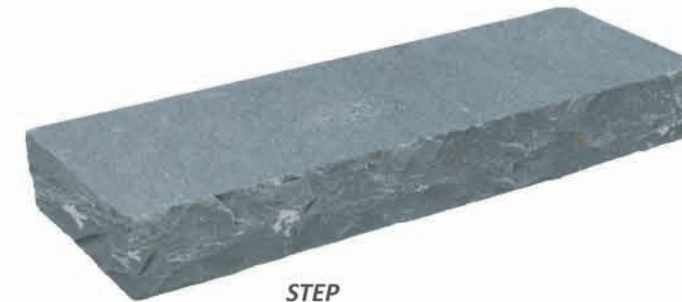
**COBBLE**  
 14x14 cm  
 14x20 cm  
 20x20 cm  
 10x10 cm  
 (available in 3-5 cm, 5-7 cm, 7-9 cm)



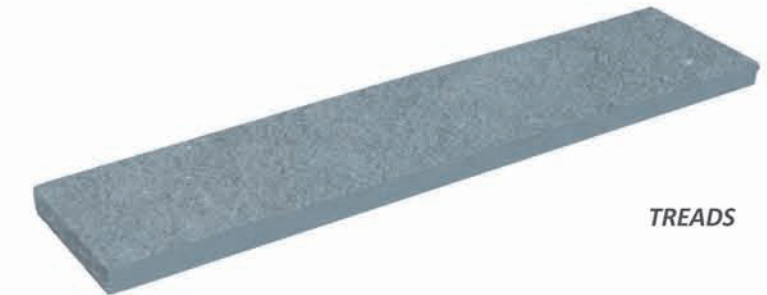
**BULL NOSE**



**COLUMN CAP**



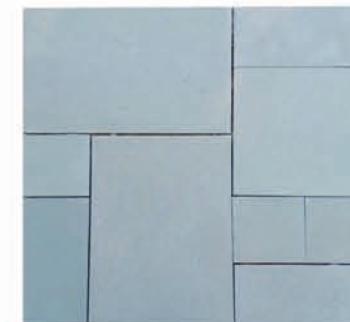
**STEP**  
 50 - 200 x 35 x 15 cm



**TREADS**

**PAVING**

- 29x29 cm
- 60x29 cm
- 60x40 cm
- 60x60 cm
- 60x90 cm



(available in 1.8 cm, 2.2cm, 2.5cm, 3 cm )

*Kota Blue is a fine-grained, durable sandstone known for its elegant bluish-grey color. Quarried in the Kota region of Rajasthan, India, it features a consistent texture and subtle natural variations that add character to its surface. This sandstone is highly valued for its strength, non-porous nature, and resistance to water and weather, making it ideal for both indoor and outdoor applications. It is commonly used for flooring, paving, wall cladding, and even in landscaping projects. Its natural beauty, combined with its durability, makes Kota Blue a popular choice in modern and traditional architectural designs..*

Custom sizes are available.

*Limestone Disclaimer:  
 Limestone is a natural material with inherent variations in color and texture, and may be prone to staining and weathering if not properly maintained*

# Tandur Grey



### COBBLE

14x14 cm  
14x20 cm  
20x20 cm  
10x10 cm  
(available in 3-5 cm, 5-7 cm, 7-9 cm)

### STEP

50 - 200 x 35 x 15 cm



### WALLING STONE

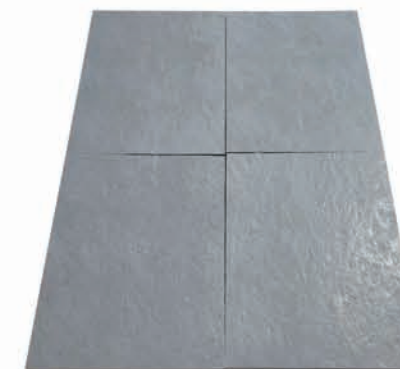
### FLAGSTONE

2-3 pcs per sqmtr  
4-6 pcs per sqmtr  
5-8 pcs per sqmtr



### PAVING

29x29 cm  
60x29 cm  
60x40 cm  
60x60 cm  
60x90 cm



(available in 1.8 cm, 2.2cm, 2.5cm, 3 cm )

*Tandur Grey is a popular limestone variety, often referred to as a sandstone, sourced primarily from the Tandur region in India. It features a soft, muted grey tone with subtle variations, giving it an elegant, natural look. The stone's surface has a fine texture and a matte finish, making it suitable for both interior and exterior applications. Known for its durability and non-porous nature, Tandur Grey is ideal for flooring, wall cladding, and landscaping. Its natural resistance to heat and moisture makes it a preferred choice in construction, especially in areas with extreme weather conditions..*

Custom sizes are available.

*Limestone Disclaimer:  
Limestone is a natural material with inherent variations in color and texture, and may be prone to staining and weathering if not properly maintained*

# Tandur Yellow



**COBBLE**

14x14 cm  
14x20 cm  
20x20 cm  
10x10 cm  
(available in 3-5 cm, 5-7 cm, 7-9 cm)



**STEP**

50 - 200 x 35 x 15 cm



**WALLING STONE**



**CIRCLE**

1.8m, 2.6m, 2.85 m, 3m, 4m



**FLAGSTONE**

2-3 pcs per sqmtr  
4-6 pcs per sqmtr  
5-8 pcs per sqmtr



**PAVING**

29x29 cm  
60x29 cm  
60x40 cm  
60x60 cm  
60x90 cm

(available in 1.8 cm, 2.2cm, 2.5cm, 3 cm )

*Tandur Yellow is a distinctive sandstone known for its warm golden-yellow hue, often complemented by subtle variations of light brown and beige. Quarried primarily in the Tandur region of Telangana, India, this sandstone is prized for its natural beauty and durability. Its fine grain texture and non-slippery surface make it an ideal choice for both indoor and outdoor applications, such as flooring, wall cladding, and paving. Resistant to weathering and erosion, Tandur Yellow stands the test of time in harsh climates. The stone's warm tones add a touch of elegance and sophistication to any architectural or landscape design.*

Custom sizes are available.

*Limestone Disclaimer:  
Limestone is a natural material with inherent variations in color and texture, and may be prone to staining and weathering if not properly maintained*

# Bundi Black



## COBBLE / TUMBLE

14x14 cm  
14x20 cm  
20x20 cm  
10x10 cm

(available in 3-5 cm, 5-7 cm, 7-9 cm)



## STEP

50 - 200 x 35 x 15 cm



## PALISADE

230 x 50 x 5 - 7 cm  
100/150/200 x 50 x 3-5 cm  
225 x 80 - 100 x 6 - 8 cm  
50-200 x 12 x 11 - 13 cm



## PAVING

29x29 cm  
60x29 cm  
60x40 cm  
60x60 cm  
60x90 cm



(available in 1.8 cm, 2.2cm, 2.5cm, 3 cm )

*Bundi Black* quarried in the Bundi region of Rajasthan, India, is renowned for its striking appearance. This natural stone features a deep, charcoal-black base, often interspersed with subtle, lighter streaks and veins, giving it a sophisticated yet organic look. Its durability and weather-resistant properties make it suitable for both indoor and outdoor applications, including flooring, wall cladding, and paving. *Bundi Black* sandstone is favored in both contemporary and traditional architecture for its timeless elegance and low-maintenance qualities. Its rich texture and color bring a unique blend of luxury and natural beauty to any design.

Custom sizes are available.

*Limestone Disclaimer:*  
Limestone is a natural material with inherent variations in color and texture, and may be prone to staining and weathering if not properly maintained



# Kadappa Black



## COBBLE / TUMBLE

14x14 cm  
14x20 cm  
20x20 cm  
10x10 cm  
(available in 3-5 cm, 5-7 cm, 7-9 cm)

## TREADS



## STEP



50 - 200 x 35 x 15 cm

## PAVING

29x29 cm  
60x29 cm  
60x40 cm  
60x60 cm  
60x90 cm



(available in 1.8 cm, 2.2cm, 2.5cm, 3 cm )

*Kadappa Black is a fine-grained, dark-colored limestone that originates from the Kadapa district in Andhra Pradesh, India. It is often referred to as Kadappa stone and is widely used for flooring, paving, and cladding. Known for its striking black appearance, this stone adds a touch of elegance and sophistication to both interior and exterior spaces. Its durability and low maintenance make it ideal for high-traffic areas. Kadappa Black is resistant to wear and tear, and its non-porous nature makes it suitable for kitchens, counter tops, and bathrooms. The stone is also valued for its affordability and versatility in design.*

Custom sizes are available.

*Limestone Disclaimer:  
Limestone is a natural material with inherent variations in color and texture, and may be prone to staining and weathering if not properly maintained*

# Kurnool Grey



## PAVING

- 29x29 cm
- 60x29 cm
- 60x40 cm
- 60x60 cm
- 60x90 cm

(available in 1.8 cm, 2.2cm, 2.5cm, 3 cm )

*"Kurnool Grey also known as sometimes Ash Grey, is a natural Limestone occurring in the South of India, with steel grey colour. The stone has fine-to-medium grain structure with a smooth surface and rough texture. The Stone is available with various surface finishes like Natural, bush hammered, Flamed etc, making it a timeless option for various indoor and outdoor projects."*

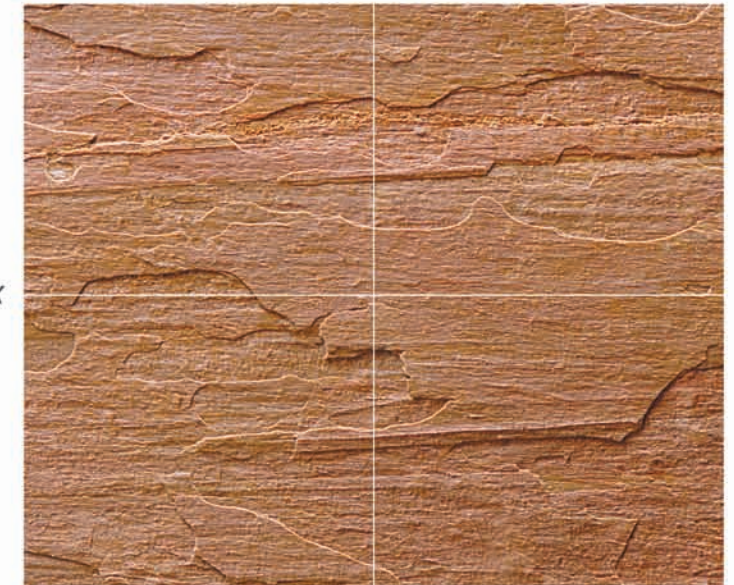
Custom sizes are available.

*Limestone Disclaimer:  
Limestone is a natural material with inherent variations in color and texture, and may be prone to staining and weathering if not properly maintained*

*"Limestone boasts a natural, cleft finish and soothing color palette, bringing elegance to any living or working space. Its exceptional durability and slip resistance make it an ideal choice for wall cladding, flooring, and various construction applications. With high resistance to freezing and thawing, limestone is perfect for commercial use. This versatile stone can be finished in various ways, including sawing, sandblasting, brushing, honing, and polishing. Available in a range of forms, including tiles, slabs, cobbles, and blocks, Lime Pink Limestone is a superior choice for any project."*



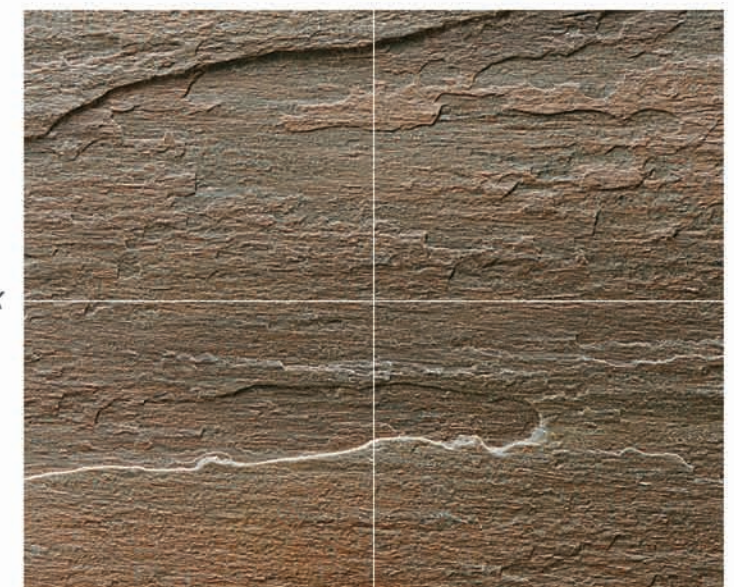
LIME PINK



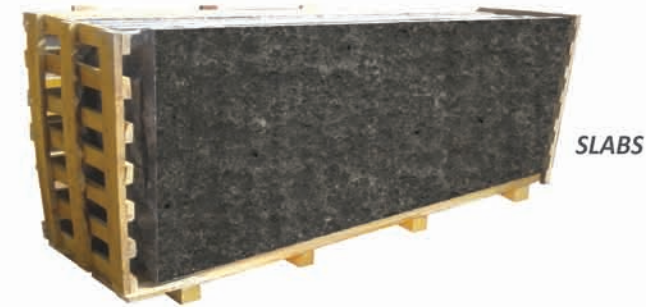
LIME GREEN



LIME PEACOCK



# Basalt



SLABS



STEP

50 - 200 x 35 x 15 cm



COBBLE / TUMBLE

14x14 cm  
14x20 cm  
20x20 cm  
10x10 cm

(available in 3-5 cm, 5-7 cm, 7-9 cm)



WALLING

20-40 x 20 x 10/15/20 cm



TREADS

PAVING

29x29 cm  
60x29 cm  
60x40 cm  
60x60 cm  
60x90 cm



(available in 1.8 cm, 2.2cm, 2.5cm, 3 cm )

*Basalt is a strong, dark-colored volcanic rock, typically black or grey, formed from cooling lava. It has a fine texture and is known for its durability, making it a popular choice in construction and design. Basalt can be found in both smooth and rough forms and is used for a variety of purposes, including flooring, countertops, and outdoor paving. Its resistance to wear and weather makes it suitable for high-traffic areas. Basalt can be polished to a shiny finish or kept in its natural state for a more rustic appearance, making it a versatile material for both indoor and outdoor use.*

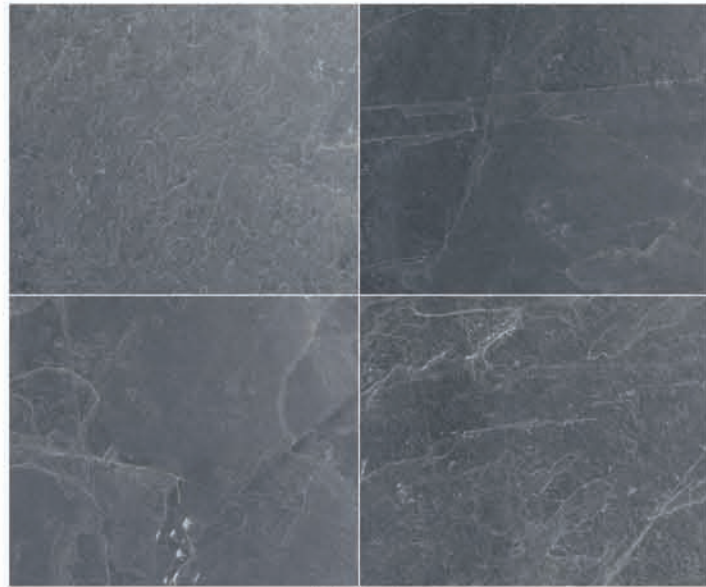
Custom sizes are available.

# Slate

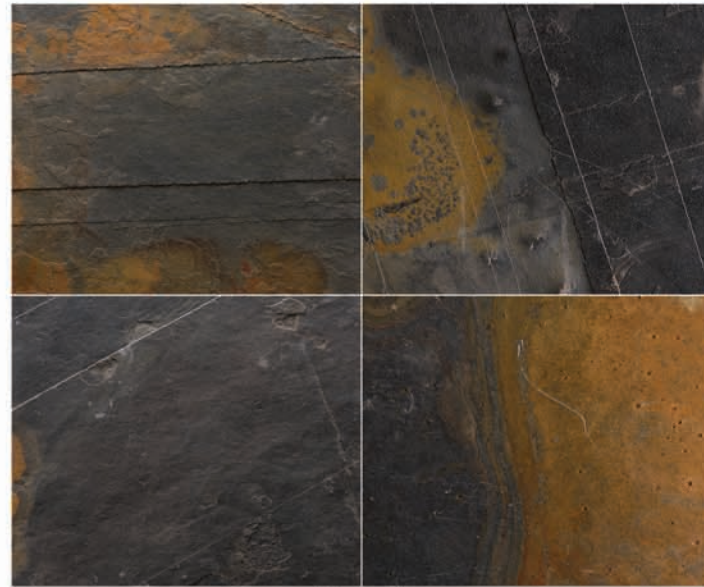
*"Slate stone embodies timeless sophistication, blending durability with a sleek, smooth finish. Its rich, dark hues make it an ideal choice for flooring, roofing, with refined elegance."*



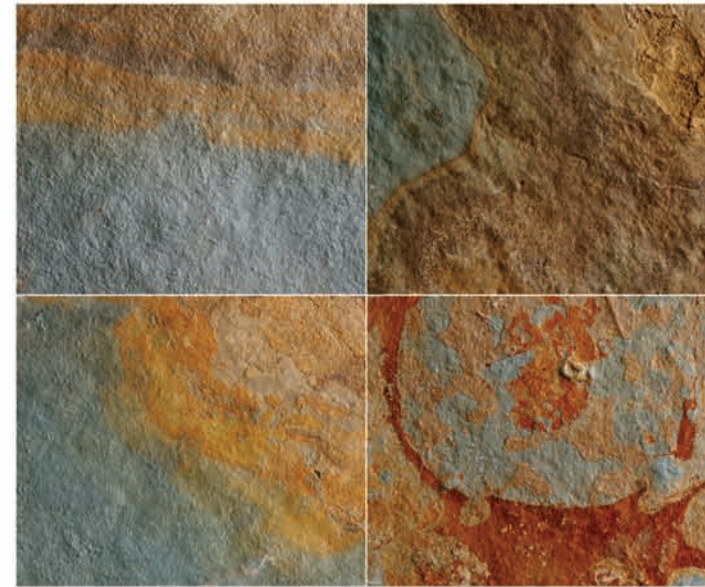
# Slate



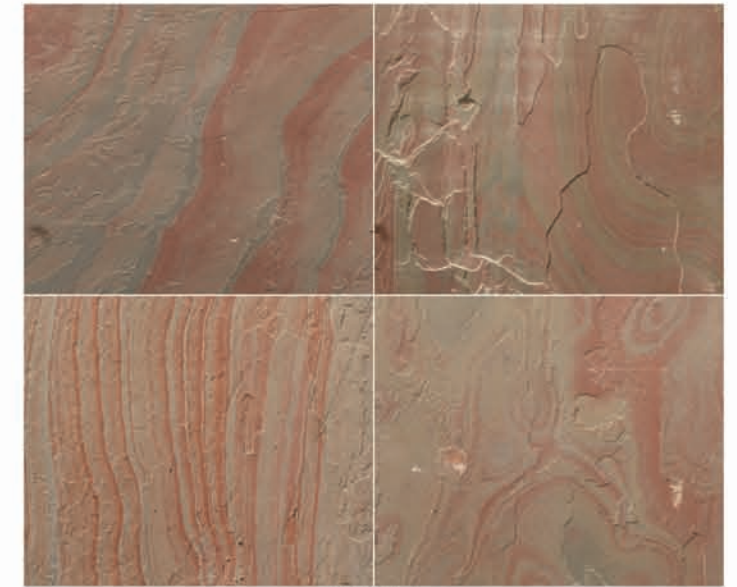
Jak Black



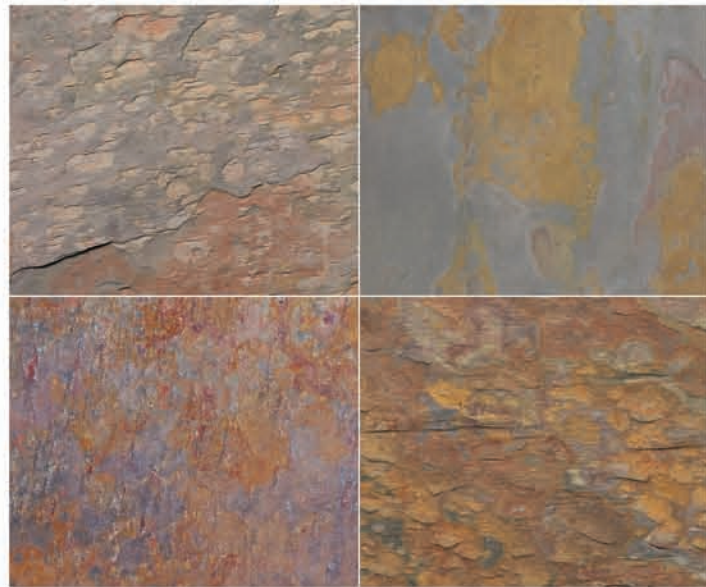
Jak Multi



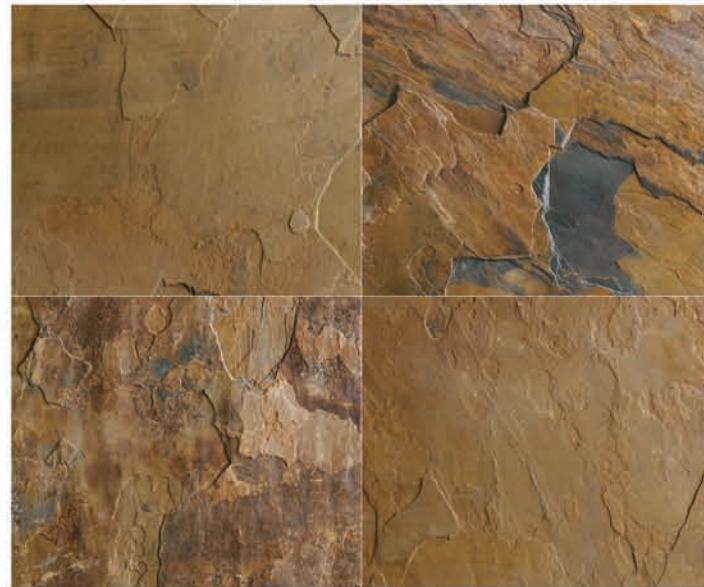
H. Green Rustic



Multi Pink



Kund Multi



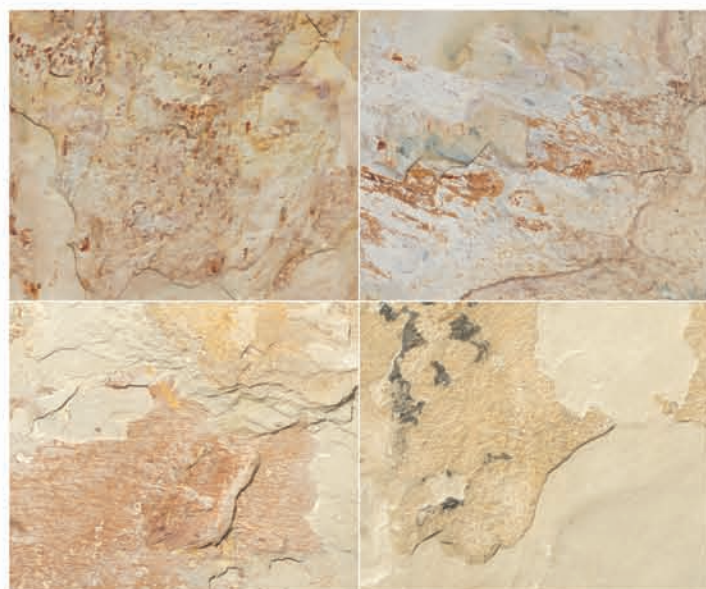
California Gold



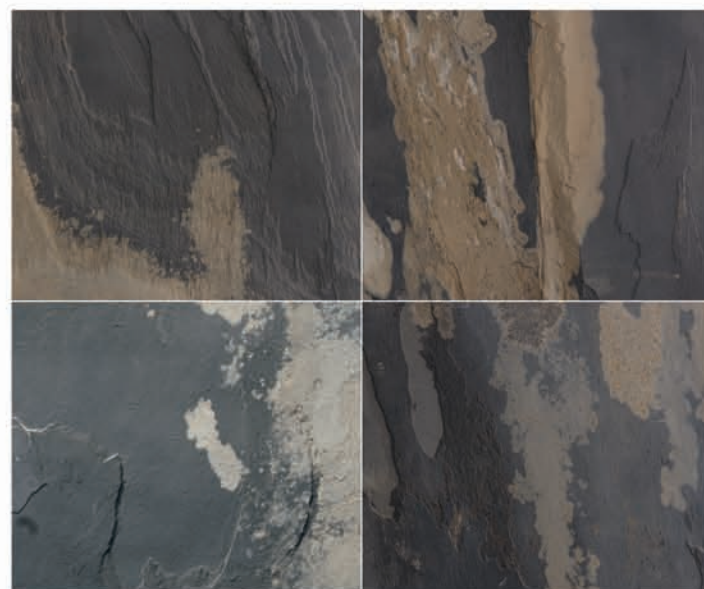
Pure Pink



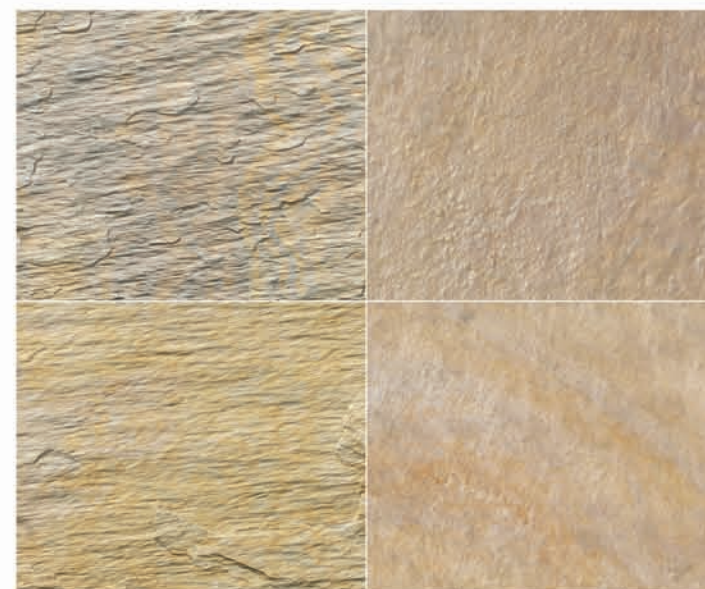
S P Autumn



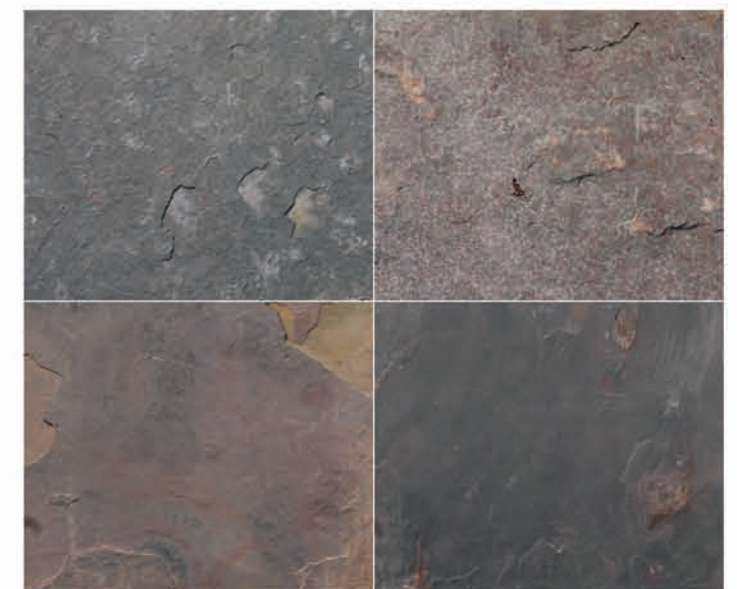
Indian Autumn



Indian Autumn Rustic



S R A Multicolour



Mayur Multi

# Quartzite



Quartzite is a hard, durable metamorphic rock formed from sandstone under high heat and pressure. It is highly resistant to weathering and is often used in construction and as a decorative stone in counter-tops.



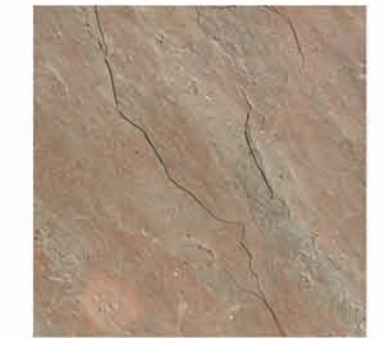
Copper



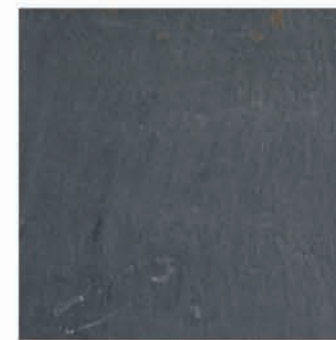
Golden



Silver Shine



Copper Multicolour



Himachal Black



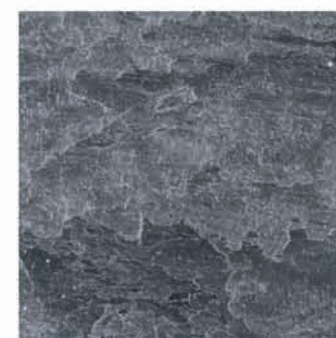
Star Galaxy



Deoli Green



Zeera Green



Silver Grey Natural



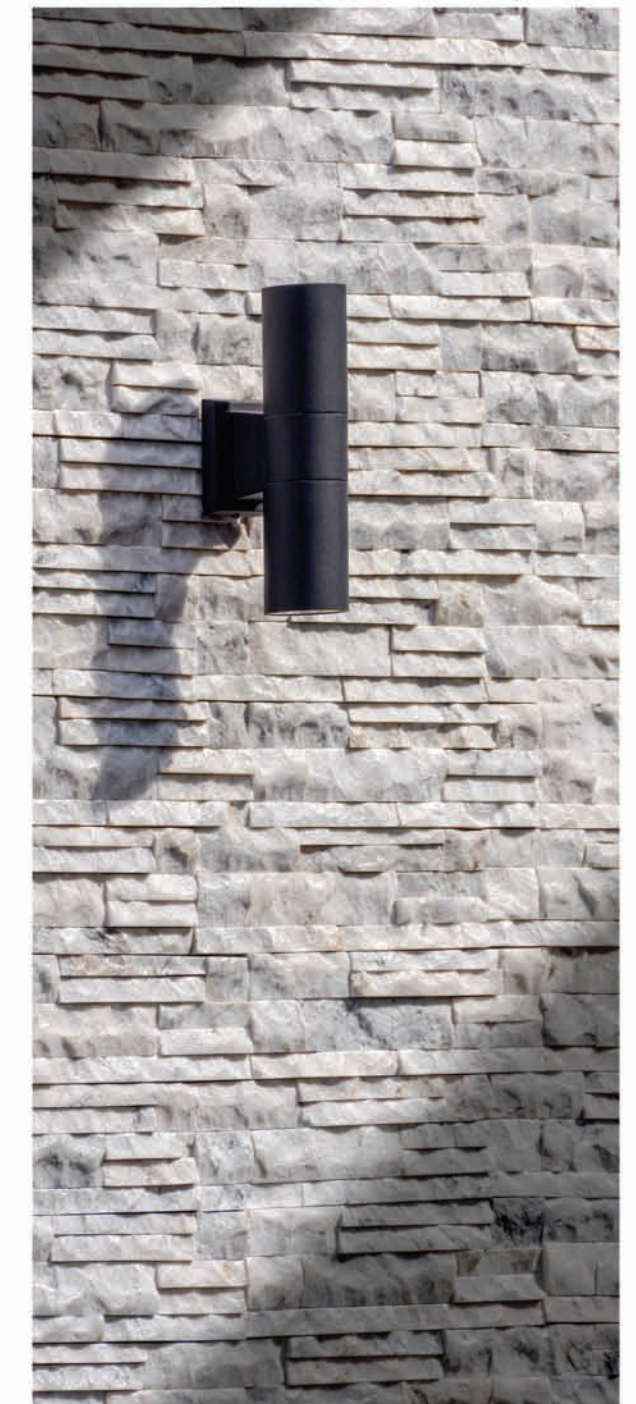
Silver Grey Honed



Ocean Green



Himachal White



# Granite

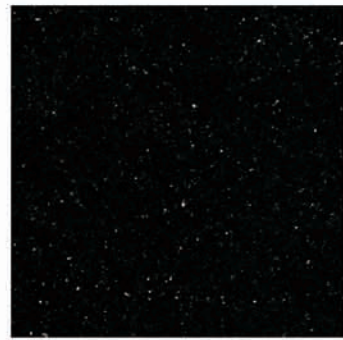
*Beautiful granite: durable, vibrant, and luxurious. Perfect for countertops and flooring, adding elegance to any space.*



# Granite



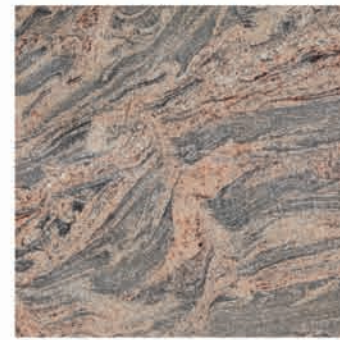
Absolute Black



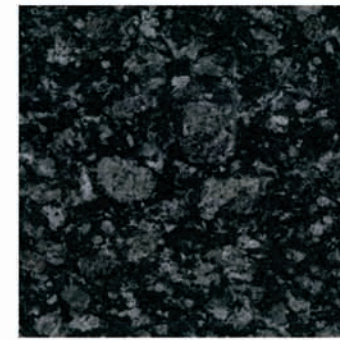
Black Galaxy



Black Forest



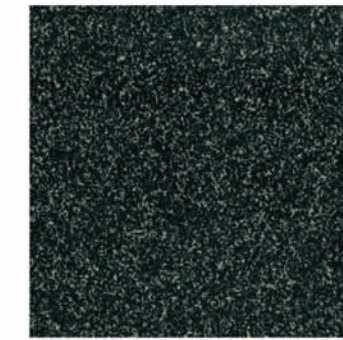
Colombo Juparana



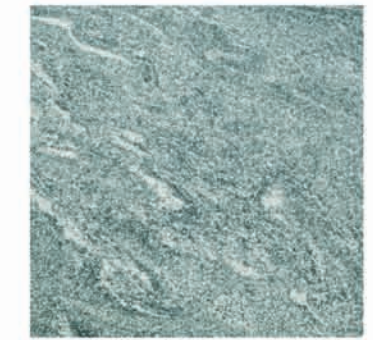
Magic Black



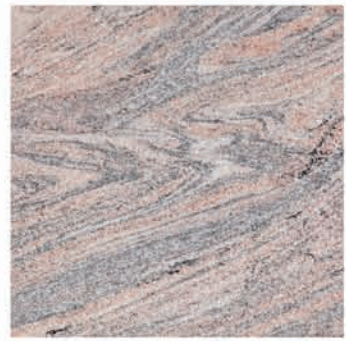
Tropical Green



Hassan Green



Kuppam Green



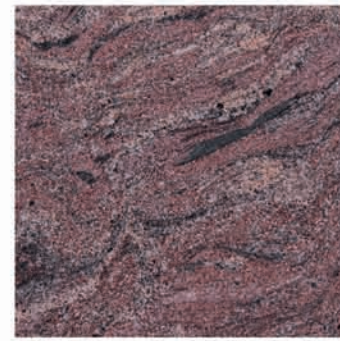
Indian Juparana



Imperial Gold



Rosewood



Paradiso Classic



Alaska White



Alaska Gold



Alaska Red



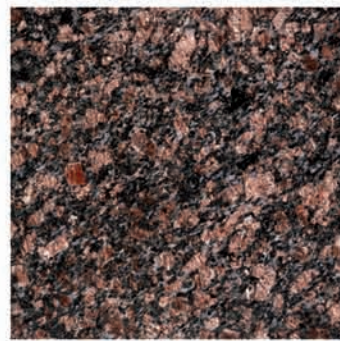
Aspen White



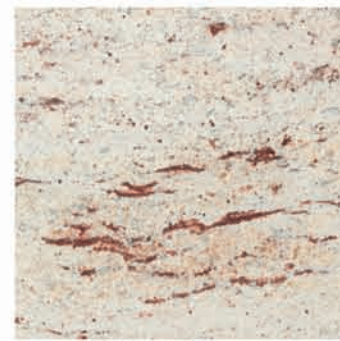
Kashmir Gold



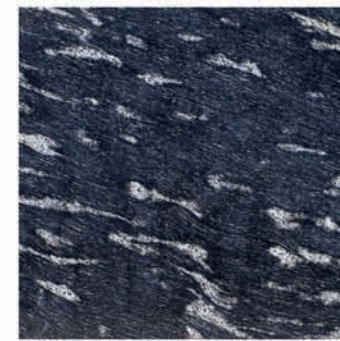
Red Multi Colour



Sapphire Brown



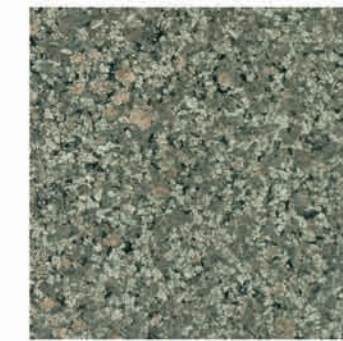
Shivakashi Brown



Fish Black



Bala Flower



Summer Green



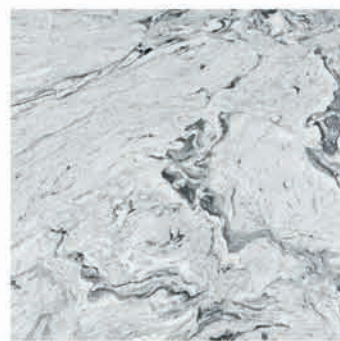
Desert Green



Imperial White



Kashmir White



Viscon White



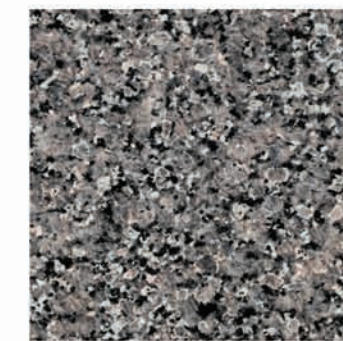
Ghiblee



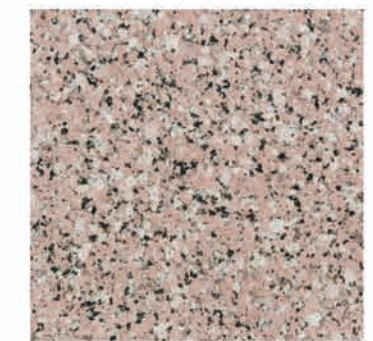
Crystal Yellow



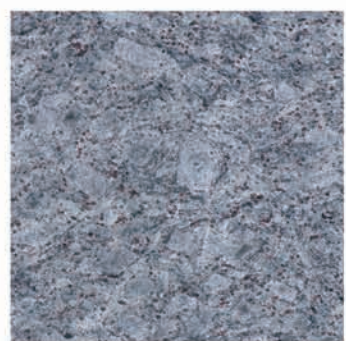
Desert Brown



Crystal Blue



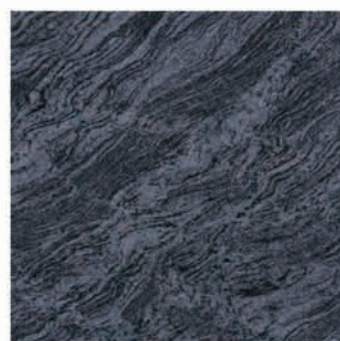
Rosy Pink



Lavender Blue



Steel Grey



Vizag Blue



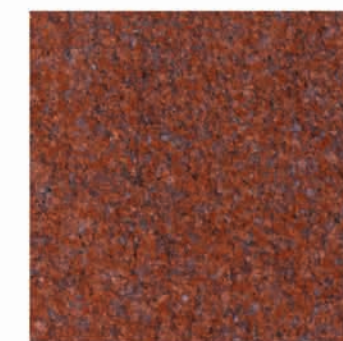
Sadaralli Grey



Copper Silk



New Imperial Red



Jhansi Red



Lakha Red



# Marble



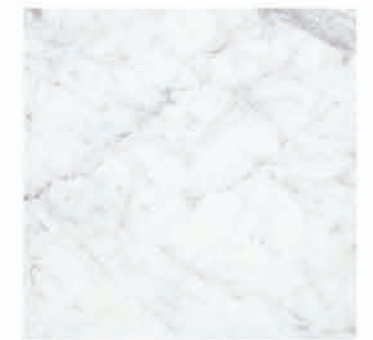
Mercury Black



Panda White



Indian Statuario



Banswara White



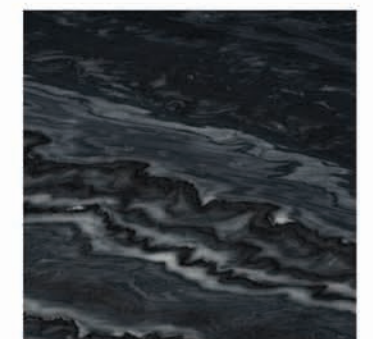
River Blue



Fantasy Brown



Bruno



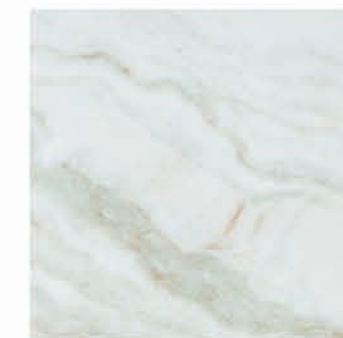
Mercury Black



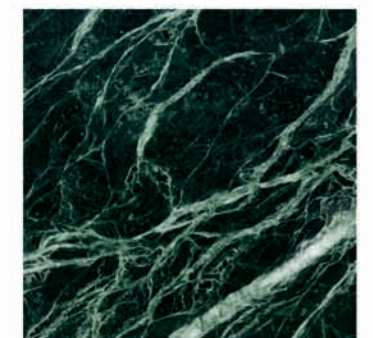
Himalayan Onyx



Pink Onyx



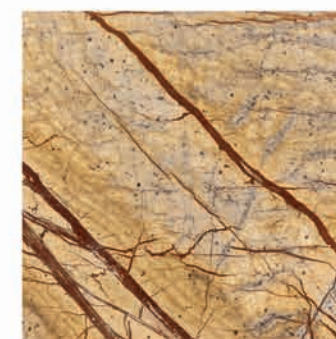
White Onyx



Spider Green



Rainforest Green



Rainforest Golden



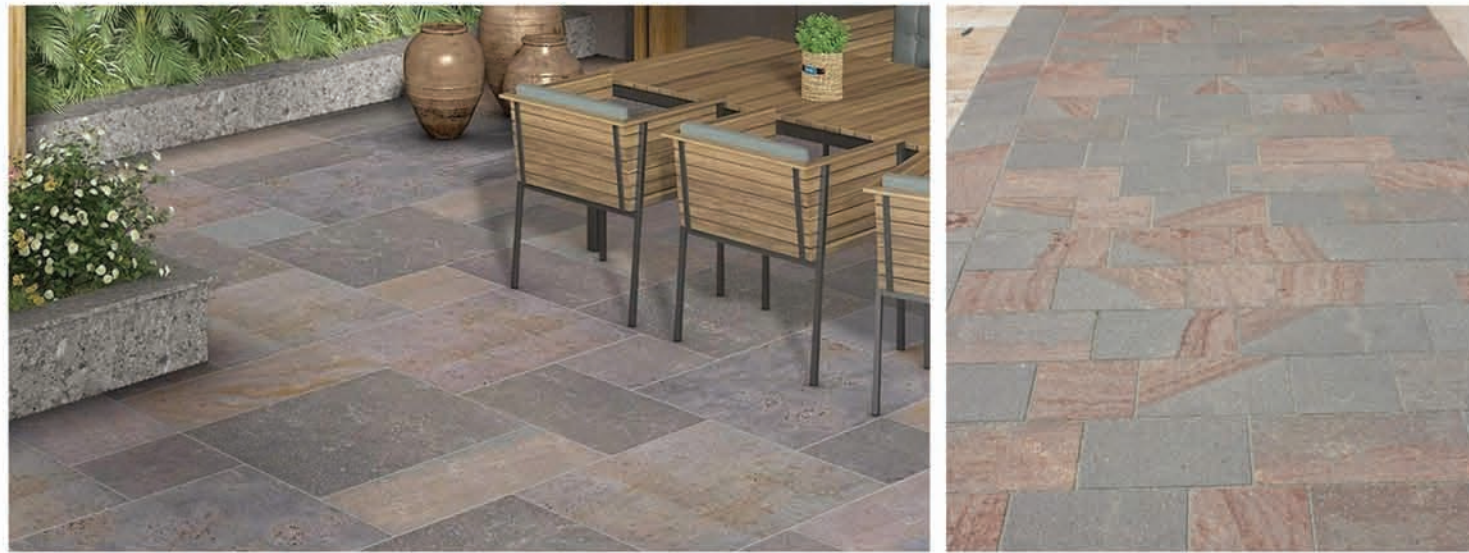
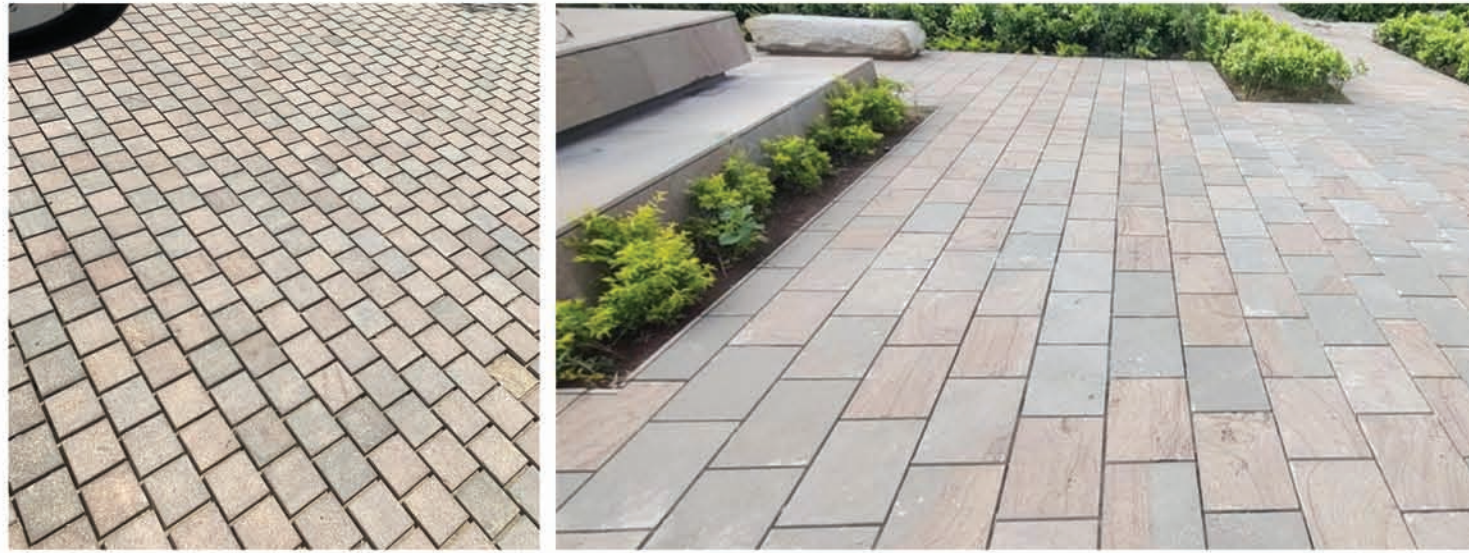
Rainforest Brown



Green Marble

# Porphyry

# Article



COBBLES



PAVING



PAVING

"Porphyry stone, a volcanic rock with a rich, ancient history. Its unique blend of durability, vibrant colors, and striking patterns makes it perfect for paving, landscaping, and architectural features, adding a touch of timeless elegance to any setting."



Fountains



Pedestals



Planters



Lamp post



Railings



Bench



Pebbles



Inlay

Fireplaces



Sculptures



# Porcelain

## Outdoor Porcelain Pavers

### Sizes Available :



### Thickness :

20mm



DIY



FROST  
RESISTANCE



STAIN  
RESISTANCE



Earthcore Grey



Desert LGY



Raj Green



Anthracite



Kandla Grey



Desert Beige



Hammer Stone Beige



Mountain White



Quartz White

## Earthcore Grey



## Desert LGY



## Raj Green



# Anthracite



# Kandla Grey



## Desert Beige



## Hammer Stone Beige



# Mountain White



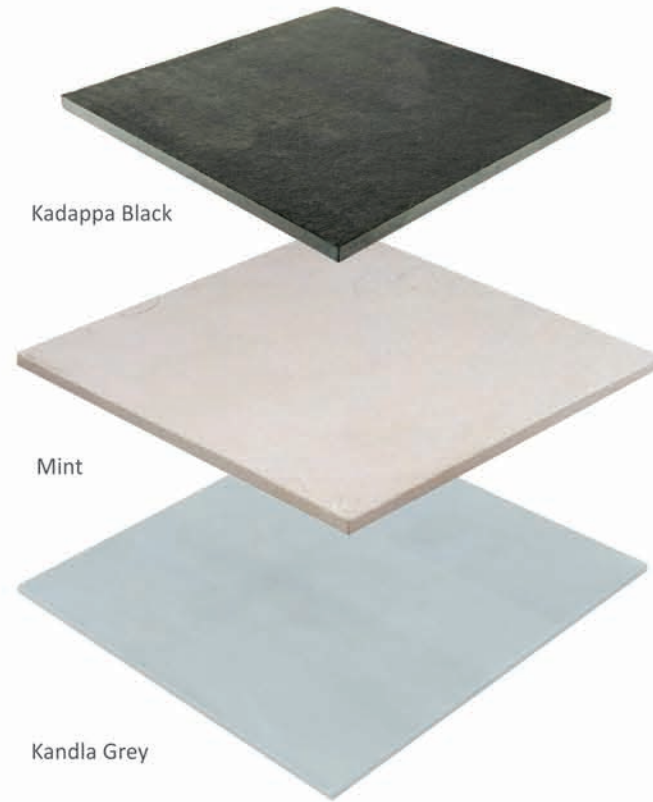
# Quartz White



# Sawn Paving

*Sawn paving* refers to paving stones that have been cut with precision using a diamond saw to achieve smooth, straight edges and a sleek, contemporary finish. Unlike naturally split or riven surfaces, *sawn paving* has a clean and consistent texture, offering a refined and modern appearance. The *sawn* process can be applied to various types of stone, including sandstone, limestone, granite, and slate.

*Sawn paving* is popular for use in patios, walkways, driveways, and terraces. The sharp edges allow for tight jointing, creating a minimalist and uniform look. Additionally, *sawn paving* is often available in a range of colors, finishes, and sizes, allowing for versatile design options that can complement both modern and traditional landscapes. Its durability and elegant appearance make it a sought-after choice in high-end landscaping and architectural projects.



Kadappa Black

Mint

Kandla Grey

Double Color



# Cobbles

COBBLE / TUMBLE

14x14 cm, 14x20 cm, 20x20 cm, 10x10 cm  
(available in 3-5 cm, 5-7 cm, 7-9 cm)



Autumn Brown



Kandla Grey



Mint



Raj Green



Buff



Modak



Sagar Black



Kandla White Beige



Slate Grey



Red Chocolate



Double Color



Tandur Grey



Tandur Yellow



Bundi Black



Kaddapa Black



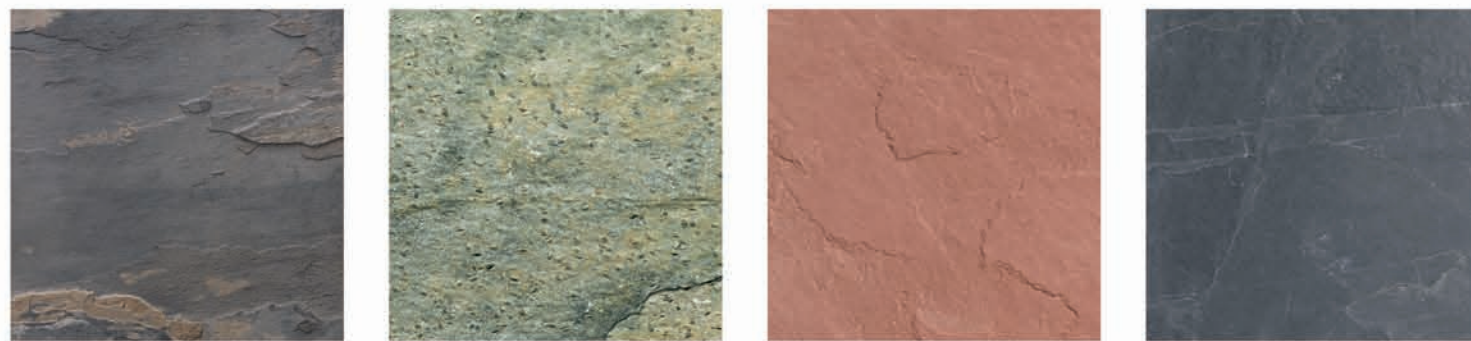
Basalt



# Stone Veneer



- 100% Natural
- Light Weight
- Flexible
- Easy to Carry
- Easy Installation
- 100% Natural
- Fire Resistant



Rustic Autumn

Zeera Green

Terra Red

Black Slate



Copper

Golden

Indian Autumn

Kund Multi colour

# Pebbles



*“Stone pebbles are small, rounded stones that have been smoothed by natural weathering processes, such as water or sand. They are often used in various applications, including:- Landscaping and gardening, Decorative pathways and walkways, Aquariums and water features, Construction and building projects, Interior design and decoration. Stone pebbles come in a variety of colors, sizes, and textures, depending on their origin and composition. Some common types of stone pebbles include:- River pebbles, Beach pebbles, Marble pebbles, Granite pebbles and Basalt pebbles.”*

